



U.S. General Services Administration



Resilience and Sustainability in Design and Construction

U.S. General Services Administration

presented by
Kevin Kampschroer
Chief Sustainability Officer

Federal (+LTH*) Concerns

- **Risk**
- Mission Assurance
- Longevity
- Durability
- Operability
- Science

TEXT



Internal Revenue Service

Mid-Atlantic United States
Flood of 2006

® US General Services Administration, April 2018



TEXT

**John Joseph
Moakley United
States Courthouse**

(Photo Credit: Marge Brenner, GSA
Region 1)

® US General Services Administration, April 2018

TEXT



King Tide Outside of Moakley Courthouse

(Photo Credit: GSA Region 1 Team
11/15/16)

Northern Border Risks: Flood and Electrical Disruption

Chief Mountain Border Crossing Babb, Montana - Pincher Creek, Alberta

(Photo Credit: U.S. Customs and
Border Protection)



® US General Services Administration, April 2018

Southern Border Risks: Flood and Fire

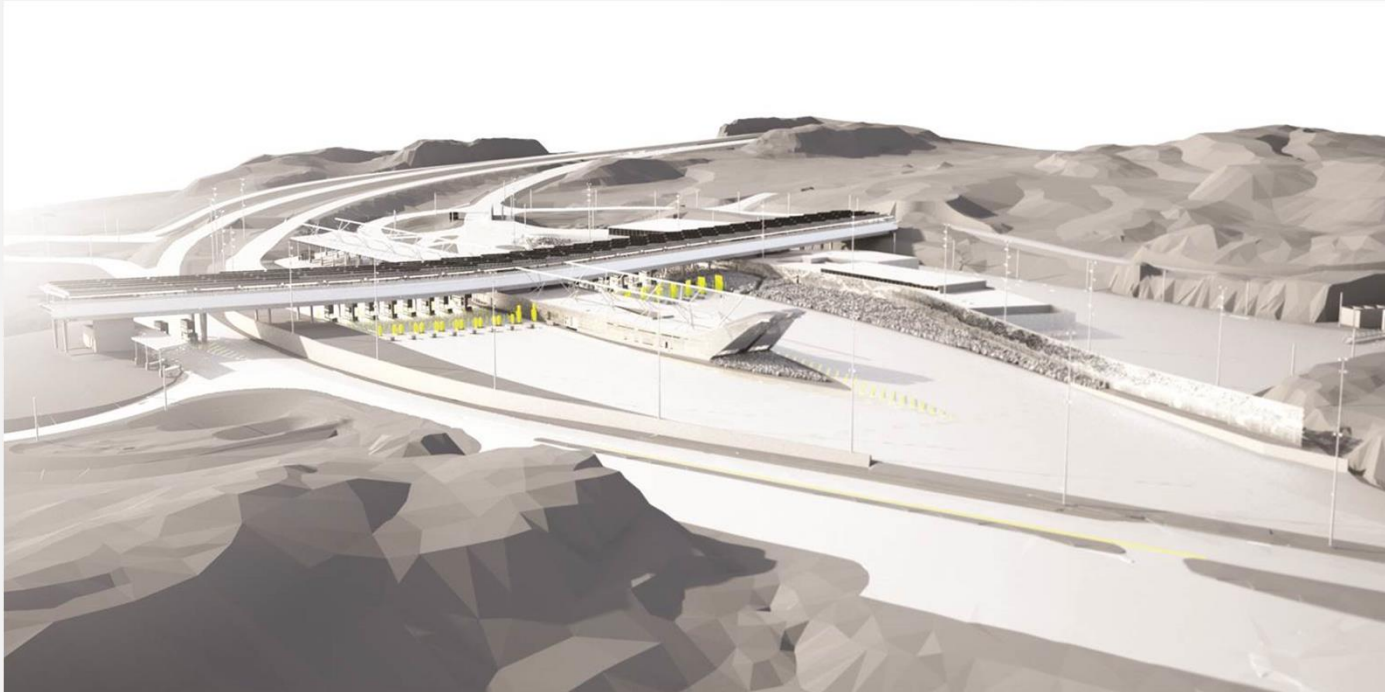
Otay Mesa Port of Entry San Diego, California - Tijuana, Mexico

(Photo Credit: Otay Mesa Chamber of
Commerce)



® US General Services Administration, April 2018

Future Risk: Volume + Technology



Alexandria Bay U.S. Land Port of Entry (*Rendering*)

Alexandria Bay, NY - Lansdowne, Ontario

® US General Services Administration, April 2018

Resources

- Kevin Kampschroer
 - kevin.kampschroer@gsa.gov
- GSA.gov/recovery
- GSA.gov/sustainability
- SFTool.gov



